

BELFAST BOYS' MODEL SCHOOL

Founded 1857



SIXTH YEAR SUBJECT CHOICES







2 Year Courses

All Level 3 courses offer progression to Higher Education at University and Further Education.



ART & DESIGN

FINE ART 1 A LEVEL, OCR

Course Content

Personal Investigation

Sketchbook and experimental pieces

Final Outcome - Coursework = 60%

Written requirement 1000 - 3000 words

External Examination 40%

Sketchbook and experimental pieces

Final outcome - 15 hours' examination

Skills Developed

- Observation Skills
- Research - Books, Library, Internet, Museum
- Drawing
- Painting
- Printing
- Textiles
- 3D
- Photography
- Visits/Workshops

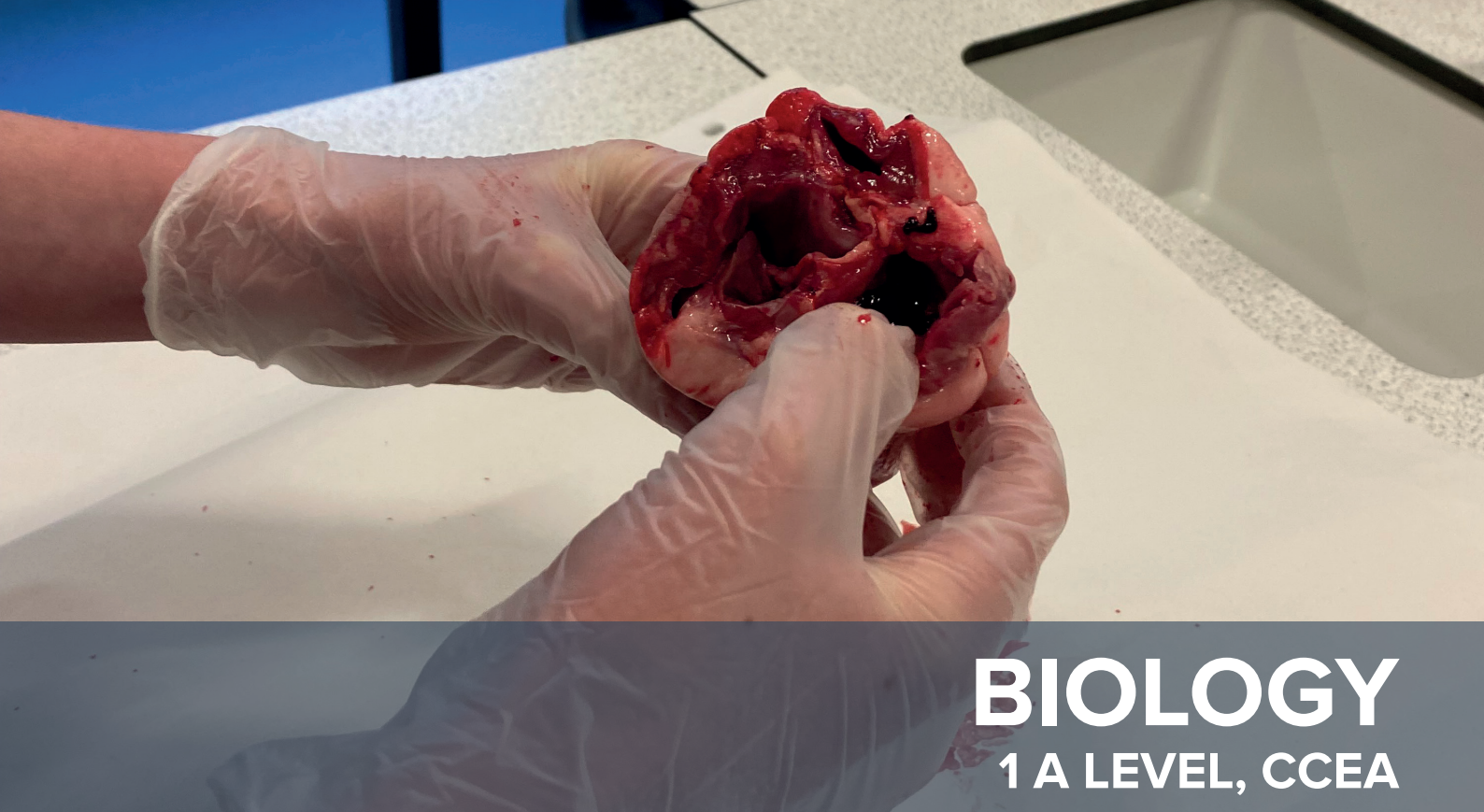
How it is Assessed

Classroom teacher assessment with external moderation

Exhibition of work

Associated Careers

- Painter
- Interior Designer
- Ceramicist
- Jeweller
- Furniture Designer
- Game Designer
- Textile Designer
- Graphic Designer
- Illustrator
- Window Dresser
- Product Design
- Advertising
- Tattooist
- Fashion Related Career
- Make-up Artist
- Garden Designer
- Web Page Designer
- Museum Curator
- Prop Maker
- Animator
- Theatre Set and Costume Design
- Art Historian



BIOLOGY

1 A LEVEL, CCEA

Course Content

- Molecules & Cells
- Organisms & Diversity
- Physiology & Ecosystems
- Biochemistry
- Genetics & Evolutionary Trends

Skills Developed

- Recognition & recall of facts, terminology & scientific concepts
- Selections, organisation & presentation of information gathered through research
- Safe conduction of practical tasks
- Recording of observations & communicating these through tables & graphs
- Planning, carrying out & evaluating investigative work
- Communication skills

How it is Assessed

Exam – 80%

Internal Assessment – 20%

Associated Careers

- Medicine
- Food Scientist
- Pharmacist
- Optician
- Sports Scientist
- Public Health Officer
- Environmental Scientist
- Animal Nurse
- Teaching
- Chemist
- Forensic Scientist



BUSINESS

BTEC NATIONAL EXTENDED CERTIFICATE, 1 A LEVEL

Course Content

4 units are required to attain this qualification

Compulsory Units

Unit 1: Exploring Business

- 25% of the qualification
- Internal assessment - coursework

Unit 2: Developing a marketing campaign

- 29% of qualification
- External assessment - Set task

Unit 3: Personal and business finance

- 29% of qualification
- External assessment - examination

Optional Unit

Unit 8: Recruitment and selection process

17% of qualification

Internal assessment - coursework

How it is Assessed

Mandatory Content

Unit 1: Coursework (25%)

Unit 2: Scenario based exam (29%)

Unit 3: Written exam (29%)

Optional Content

Unit 8: Recruitment and selection process (portfolio) (17%)

Units are assessed as Pass, Merit and Distinction

Associated Careers

Students can take this course to complement other advanced level courses such as Travel and Tourism, Computing or IT.

This could lead to higher education in areas of Business Studies, Marketing, Accounting or more general higher education courses.

This course gives students an opportunity to choose from a wide range of professions including Law, Finance, the Stock Market, Insurance or Management.

Skills Developed

- Marketing skills
- Personal and Business Financial skills
- Job Application skills, Interview skills
Communication skills, Problem Solving skills
- Team Building skills
- Analytical skills



ENVIRONMENTAL TECHNOLOGY

1 A LEVEL, CCEA

Course Content

Mandatory Units

- **AS Component 1:** The Earth's Capacity to Support Human Activity
- **AS Component 2:** Renewable Energy Technologies
- **A2 Component 1:** Building and Managing a Sustainable Future
- **A2 Component 2:** Environmental Building Performance and Measurement

- **AS Component 2:** Renewable Energy Technologies

Internal Assessment - Students produce a technical report based on a realistic scenario relating to the use of renewable energy technologies **20% of A Level**

- **A2 Component 1:** Building and Managing a Sustainable Future

External written examination - 2 hours 30% of A Level

- A2 Component 2: Environmental Building Performance and Measurement

Internal Assessment - Students produce a technical report relating to the environmental performance of a local building. **30% of A Level**

Skills Developed

- Communication
- Self-evaluation and Self-Management
- Presentation
- Evaluation
- Creativity
- Working with Others
- Decision making
- Planning
- Problem Solving
- Literacy - Research, Analysis and Evaluation
- Numeracy Skills - Data Analysis

How it is Assessed

- **AS Component 1:** The Earth's Capacity to Support Human Activity

External written examination – 1hr 30mins 20% of A Level

Associated Careers

- Manufacturing
- Electricity, Gas & Water Management
- Construction
- Wholesale and Retail Trade
- Environmental Consultancies
- Waste Management
- Environmental Technician
- Project Management
- Landscape Architect
- Construction Engineer
- Engineering Technician
- Chartered Engineer
- Urban Planner
- Ecologist
- Renewable Energy and Sustainability Co-Ordinator



ENGINEERING

BTEC NATIONAL EXTENDED CERTIFICATE, 1 A LEVEL

Course Content

Mandatory Units

- Unit 1: Engineering Principles
- Unit 2: Delivery of Engineering Processes Safely as a Team
- Unit 3: Engineering Product Design and Manufacture

Optional Units (1 of the following)

- Unit 9: Work Experience in the Engineering Sector
- Unit 10: Computer Aided Design in Engineering
- Unit 35: Computer Programming
- Unit 44: Fabrication Manufacturing Processes

Skills Developed

- Communication
- Self-evaluation and Self-Management
- Presentation
- Evaluation
- Creativity
- Working with Others
- Decision making
- Planning
- Problem Solving
- Literacy
- Numeracy Skills

How it is Assessed

Unit 1: Engineering Principles

External written examination (33%)

Unit 2: Delivery of Engineering Processes Safely as a Team

Internal Assessment (16.5%)

Unit 3: Engineering Product Design and Manufacture

External written examination (33%)

Optional Units

Internal Assessment (16.5%)

Associated Careers

- Manufacturing
- Construction
- Architecture
- Landscape Architect
- Construction Engineer
- Mechanical Engineer
- Civil Engineer
- Systems Engineer
- Quantity Surveyor
- Engineering Technician
- Chartered Engineer
- Urban Planner



ENGLISH LITERATURE

CCEA, 1 A LEVEL

Course Content

AS Units

1. The Study of Poetry 1900 - Present and Drama 1900 - Present
2. The Study of Prose Pre 1900

A2 Units

1. Shakespeare
2. The Study of Poetry Pre 1900 and Unseen Poetry
3. Internal Assessment

Skills Developed

- Engaging critically and creatively with a substantial body of texts.
- Developing and applying knowledge of literary analysis and evaluation.
- Deepening your understanding of the changing traditions of literature in English.
- Carrying out independent research and presenting personal responses appropriate to literary study.
- Organising and supporting your ideas in a logical manner.
- Writing accurately and clearly in a literary register.
- Analysing and exploring language.
- Exploring the context of texts and others' interpretations of them.
- Making connections between texts.
- Developing your ability to reason and come to well-informed conclusions.
- Thinking independently.
- Developing advanced study skills that prepare you for third level education

How it is Assessed

Year 13

AS Units 1 + 2 - Two external exams in Year 13, 40%

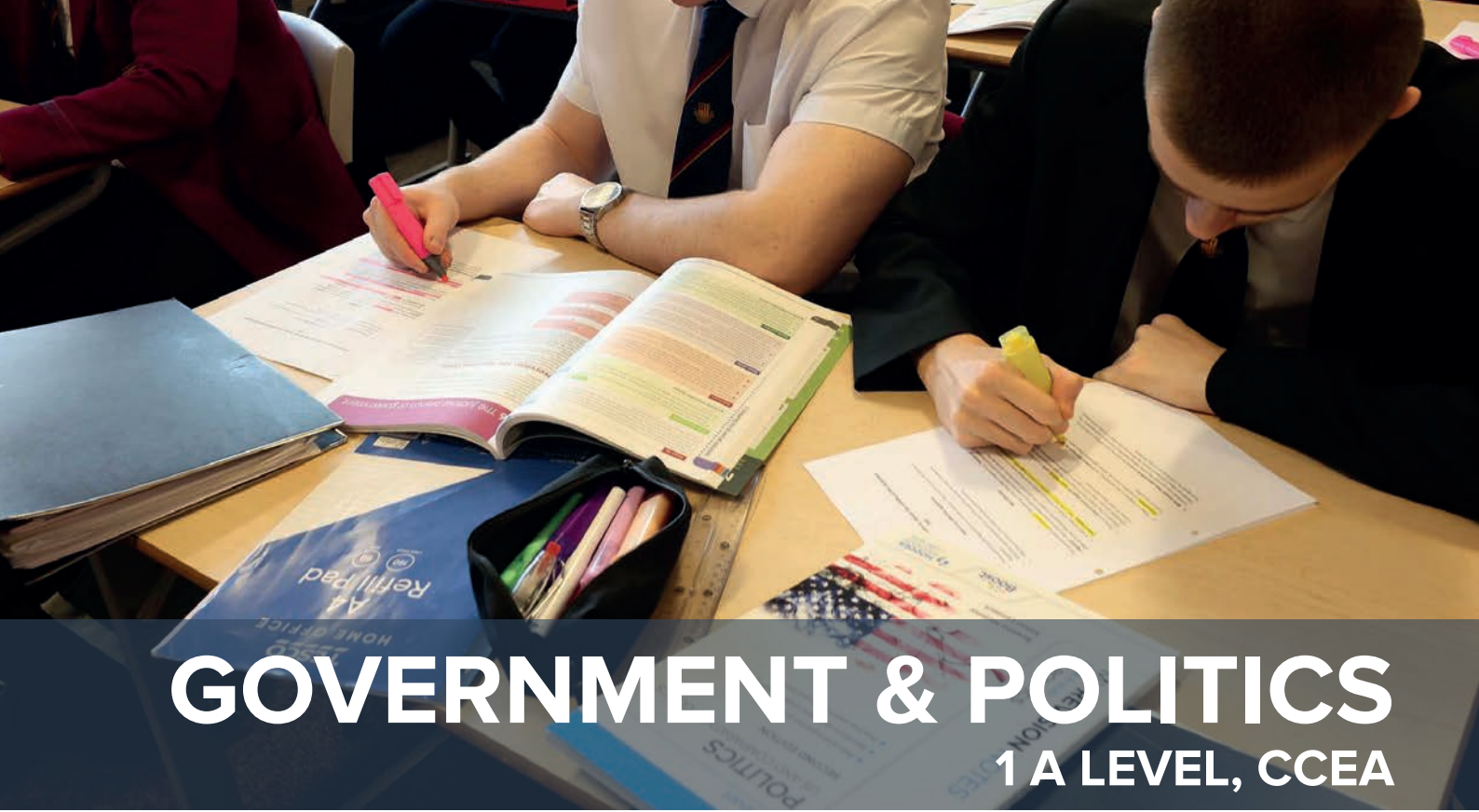
Year 14

A2 Units 1 + 2 - Two external exams in Year 14, 40%

A2 Unit 3 - Internally assessed essay, 20%

Associated Careers

- Politician
- Publisher
- Translator
- Presenter
- Multi Media Manager
- Editor for a newspaper or magazine
- Journalist
- Events Manager
- Sales Manager
- Speech Therapist
- Librarian
- Forensic Linguist
- Teacher / Teacher of English as a Second Language (live abroad)
- Social Worker
- Web Content manager



GOVERNMENT & POLITICS

1 A LEVEL, CCEA

Course Content

AS Modules

1. Government and Politics of Northern Ireland
2. The British Political Process

A2 Modules

3. USA/UK Comparative study
4. Political Power

Skills Developed

- Research
- Analysis
- Handling documents
- Presentation Skills (IT)
- Independent thinking
- Problem Solving
- ICT
- Selection of relevant data to support an argument
- Objectivity in essay writing
- Use of English Language (Written/Oral)

How it is Assessed

AS:

Two external Exams

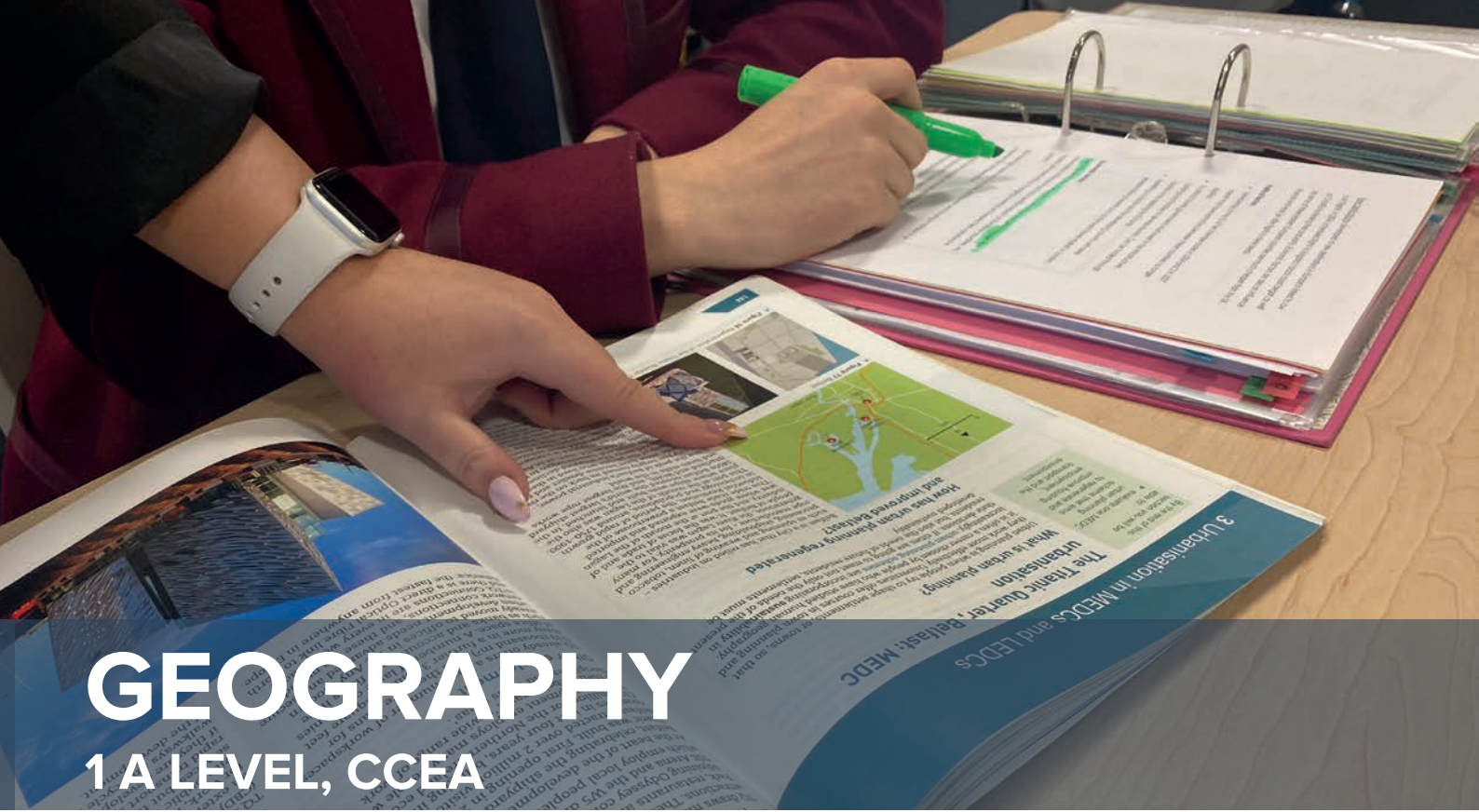
A2:

Two external Exams

(No coursework)

Associated Careers

- Journalist
- Advocate
- Barrister
- Political Writer
- Teacher
- University Lecturer
- Diplomatic Service
- Researcher
- Actor
- Public Relations
- Civil Service
- Education Officer
- Social Worker
- TV Producer
- Politician



GEOGRAPHY

1A LEVEL, CCEA

Course Content

- Unit AS 1: Physical Geography
- Unit AS 2: Human Geography
- Unit AS 3: Fieldwork Skills and Techniques in Geography,
- Unit A2 1: Physical Processes, Landforms and Management,
- Unit A2 2: Processes and Issues in Human Geography,
- Unit A2 3: Decision Making in Geography.

Skills Developed

- Data collection
- Analysis
- Interpreting geographical information
- Data processing
- Using ICT
- Presenting
- Organisation

How it is Assessed

- Unit AS 1: Physical Geography 40% of AS, 16% of A-Level
- Unit AS 2: Human Geography, 40% of AS, 16% of A-Level
- Unit AS 3: Fieldwork Skills and Techniques in Geography, 20% of AS, 8% of A-Level
- Unit A2 1: Physical Processes, Landforms and Management, 24%
- Unit A2 2: Processes and Issues in Human Geography, 24%
- Unit A2 3: Decision Making in Geography. 12%

Associated Careers

- Social Researcher
- Town Planner
- GIS Officer
- Market Researcher
- Teacher
- Surveyor
- Tourism Officer
- Sustainability Consultant



Health and social care

HEALTH & SOCIAL CARE

1 A LEVEL, CCEA

Course Content

Compulsory Units:

- Unit AS 1: Promoting Quality Care - Internal
- Unit AS 2: Communication in Health, Social Care and Early Years Settings - Internal
- Unit AS 3: Health and Well-Being – External written exam
- Unit A2 3: Providing Services– External written exam

Optional units, 2 units from:

- Unit A2 1: Applied Research- Internal
- Unit A2 2: Body Systems and Physiological Disorders- Internal
- Unit A2 4: Public Health and Health Promotion- Internal
- Unit A2 5: Supporting the Family- Internal

There is a 3 day placement in Year 13.

How it is Assessed

External Exams in May / June

AS Level

40% - 2 units of coursework and 1 external exam

A2 Level

60% - 2 units of coursework and 1 external exam

Associated Careers

- Psychology
- Nursing
- Social work
- Health Care Assistant
- Healthcare Support Workers
- Social science
- Community Development Worker
- Counsellor
- Youth Worker
- Occupational Therapist

Skills Developed

- Communication
- Using Mathematics
- Using ICT
- Problem Solving
- Working with Others
- Self-Management
- Working independently
- Literacy - Research, Analysis and Evaluation



HISTORY

1 A LEVEL, CCEA

Course Content

AS Modules

1. Germany 1919 - 1945
2. Russia 1914 - 1941

A2 Modules

1. Clash of Ideologies in Europe 1900 - 2000
2. Partition of Ireland 1900 - 1925

Skills Developed

- Knowledge and understanding of historical themes, topics and periods studied.
- Understanding of key historical terms and concepts and an ability to use them appropriately.
- Ability to assess the significance of events, individuals, ideas, attitudes and beliefs and the ways in which they influence behaviour and actions.
- Ability to analyse historical interpretations of topics, individual issues and themes.
- Ability to analyse sources

How it is Assessed

External Exams in May / June

AS: Year 13

Germany 50% of AS 20% of A Level
Russia 50% of AS 20% of A Level

A2: Year 14

Clash of Ideologies 20% of A Level
Ireland 40% of A Level

Associated Careers

- Archaeologist
- Archivist
- Museum/Art Gallery
- Genealogist
- Historical Writer/Editor
- Journalist
- Barrister
- Solicitor
- Researcher for TV/Film/Radio
- Costume Design
- Set Design
- Tourism Officer
- Tour Guide
- Town Planner
- History Teacher
- Actor
- Careers in the Diplomatic service



NUTRITION AND FOOD SCIENCE

CCEA – 1 A LEVEL

Course Content

AS Modules

AS 1 – Principles of Nutrition

AS 2 – Diet, Lifestyle and Health

A2 Modules

A2 1 – Option B – Food Safety and Quality

A2 2 – Research Project of Choice

How it is Assessed

AS: Year 13

2 written examinations

40% of A Level

A2: Year 14

Written examination (30%)

Internally assessed Research Project (30%)

60% of A Level

Associated Careers

- Food Technologist
- Product Developer
- Dietician
- Nutritionist
- Restaurant Management
- Chef
- Army Catering
- Hotel Management
- Leisure Industry
- Tourist Industry
- Food Processor

Skills Developed

- Independence
- Interpersonal
- Practical
- Teamwork
- Numeracy
- Literacy
- Organisation
- Presentation
- Communication



Course Content

Mandatory Units

Unit 1: Information Technology Systems

Unit 2: Creating Systems to Manage Information

Unit 3: Using Social Media in Business

Optional Units

Unit 6: Website Development

Skills Developed

- An independent user of ICT
- Advanced ICT skills in Microsoft Office Software
- Advanced ICT skills in Adobe Software
- Graphic design skills
- Animation software to produce animations
- Web authoring software for the design and creation of websites
- Computer systems learning about how PC and Mac computers function
- Employability skills and effective methods of communication in the world of work
- Entrepreneurial skills by understanding ICT and its place in the world of business

How it is Assessed

- **58% external assessment**
- **42% internal assessment**

Associated Careers

- Computer Operator
- User Support Manager
- IT Software Trainer
- Web Designer
- Web Analyst
- Graphic Designer
- Architect
- Accountant
- Software Engineer
- ICT Teacher
- ICT Technician
- Games Software Designer
- Engineer



INFORMATION TECHNOLOGY

BTEC NATIONAL DIPLOMA, 2 A LEVELS

Course Content

Mandatory Units

- Unit 1:** Information Technology Systems
- Unit 2:** Creating Systems to Manage Information
- Unit 3:** Using Social Media in Business
- Unit 4:** Programming
- Unit 9:** IT Project Management
- Unit 11:** Cyber Security and Incident Management

Optional Units

- Unit 6:** Website Development
- Unit 18:** Digital Animation and Effects

Skills Developed

- An independent user of ICT
- Advanced ICT skills in Microsoft Office Software
- Advanced ICT skills in Adobe Software
- Graphic design skills
- Animation software to produce animations
- Web authoring software for the design and creation of websites
- Computer systems learning about how PC and Mac computers function

- Employability skills and effective methods of communication in the world of work
- Entrepreneurial skills by understanding ICT and its place in the world of business

How it is Assessed

- **46% external assessment**
- **54% internal assessment**

Associated Careers

- Computer Operator
- User Support Manager
- IT Software Trainer
- Web Designer
- Web Analyst
- Graphic Designer
- Architect
- Accountant
- Software Engineer
- ICT Teacher
- ICT Technician
- Games Software Designer
- Engineer



LIFE AND HEALTH SCIENCES

CCEA, 1 A LEVEL

Course Content

AS Modules:

1. Experimental Techniques
2. Human Body Systems
3. Industrial Chemistry

A2 Modules:

1. Scientific Investigation; Method, Analysis and Evaluation.
2. Organic Chemistry
3. Medical Physics

Skills Developed

Develop competence in a range of practical, mathematical, ICT and problem-solving skills

- Advanced study skills in preparation for further education
- Communication – Talking and Listening, reading and report writing.
- Working with others
- Self-Management

How it is Assessed

AS Modules:

Unit 1: Internally assessed (Student portfolio) 13% of A Level Grade

Unit 2: External exam 13% of A Level Grade

Unit 3: External exam 13% of A Level Grade

A2 Modules:

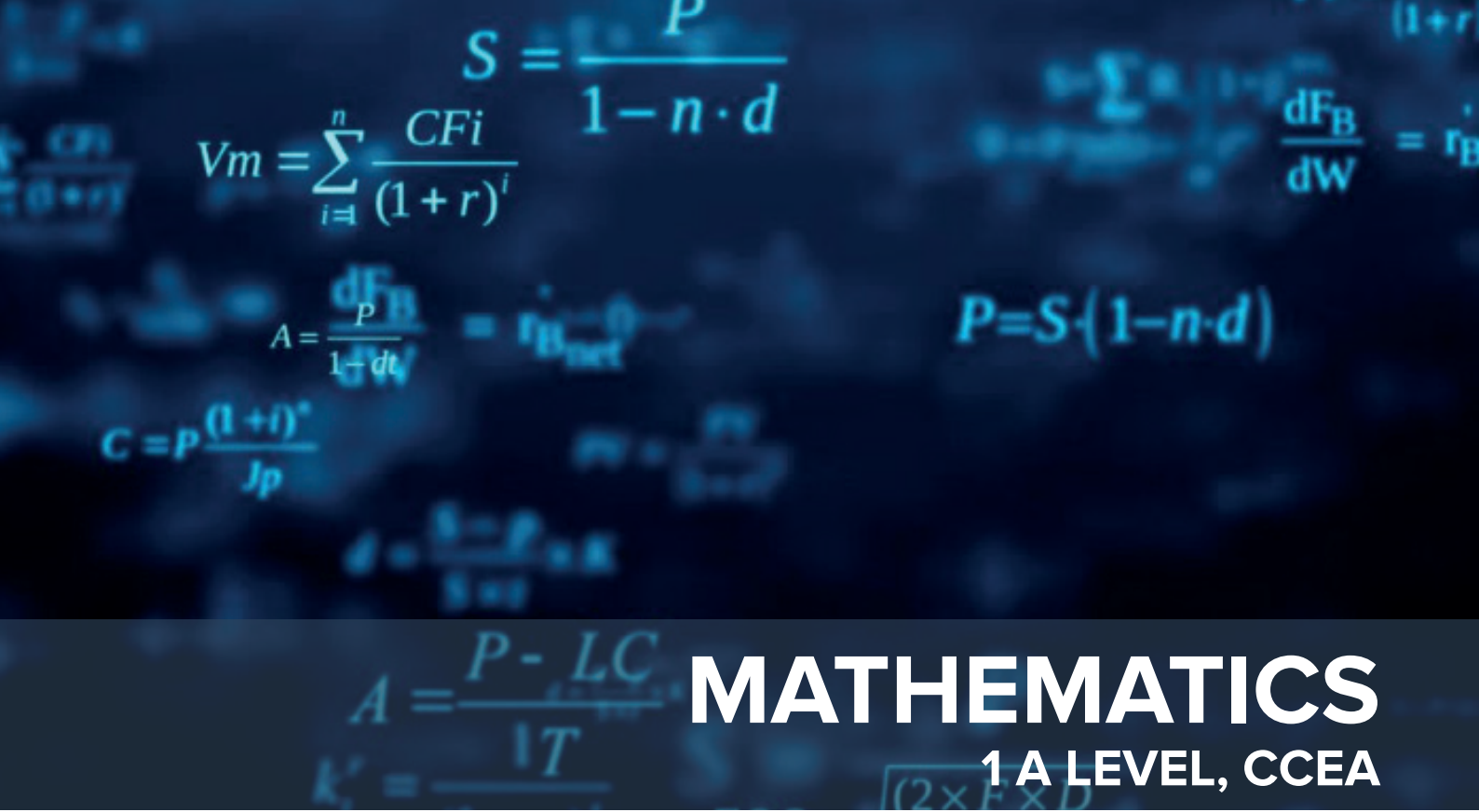
Unit 1: Internally assessed (Student portfolio, lab book and research report) 20% of A Level Grade

Unit 2: External Exam 20% of A Level Grade

Unit 3: External Exam 20% of A Level Grade

Associated Careers

- Food Scientist
- Sports Scientist
- Physiotherapist
- Optician
- Child Development
- Environmental Scientist
- Forensic Scientist
- Teaching
- Animal Nursing



MATHEMATICS

1 A LEVEL, CCEA

Course Content

Pure Mathematics

Applied Mathematics

Skills Developed

- Calculation
- Collection of data, analysis and interpretation
- Logical reasoning and problem solving
- Understanding of probability
- Understanding of the maths that underpins many aspects of our lives. The ability to apply a range of maths skills to different situations.
- Ability to process, interpret and analyse information.

How it is Assessed

Examination each year in June

4 Modules - 2 Pure, 2 Applied

Year 13

100% of AS Award

40% of A2 Award

Year 14

60% of A2 Award

Associated Careers

'A' Level Maths develops the most transferrable skills used in industry.

- Accountancy
- Architecture
- Teaching
- Engineering
- Insurance and Finance
- Any scientific based profession
- Healthcare
- Medicine
- Biochemical Sciences
- Natural Sciences



MEDIA STUDIES

1 A LEVEL, WJEC

Course Content

Unit 1: Investigating The Media

Unit 2: Creating a Media Production

Unit 3: Media in a Global Age

Unit 4: Creating a Cross-Media Production

Skills Developed

- Analytical Skills
- Research Skills
- Communication Skills
- Photoshop Skills
- In design Skills
- Internet Skills
- Debating Skills
- Evaluate Media Texts and their relationship with an audience.
- Planning and creating a Media Text.
- Digital Camera Skills
- Essay Writing Skills
- Editing Skills

How it is Assessed

AS:

(40% of full A Level exam over 2 years)

24% from sitting 1 exam

16% Coursework

A2:

(60% of full A Level)

36% from sitting 1 exam

24% Coursework

Associated Careers

- Careers in Advertising
- Cinema Manager
- TV/Film/Video Director
- Careers in Marketing
- Public Relations Officer
- Researcher
- Entertainment Manager
- Radio/TV Presenter
- Scriptwriter
- Press Officer
- Media Consultant
- Photo Journalist
- Writer
- IT
- Web Design
- Games Design



UNIFORMED PROTECTIVE SERVICES

BTEC EXTENDED CERTIFICATE, 1 A LEVEL

Course Content

Mandatory Units

Unit 2 - Behaviour and Discipline in the Uniformed Protective Services External Exam 33%

Unit 5 - Teamwork, Leadership and Communication in the Uniformed Protective Services Portfolio

Optional Units

Unit 10 - Skills for Outdoor Activities and the Uniformed Protective Services Portfolio

Unit 13 - Introduction to Criminology – Portfolio

Skills Developed

- Professional and personal skills
- Communication - verbal and non-verbal
- Presentation, research and evaluation
- Co-operation, problem solving and teamwork
- Conflict management
- Self-evaluation and self-management
- ICT skills in commonly used programmes
- Leadership and instruction
- Action Planning
- Peer Assessment
- Adaptability

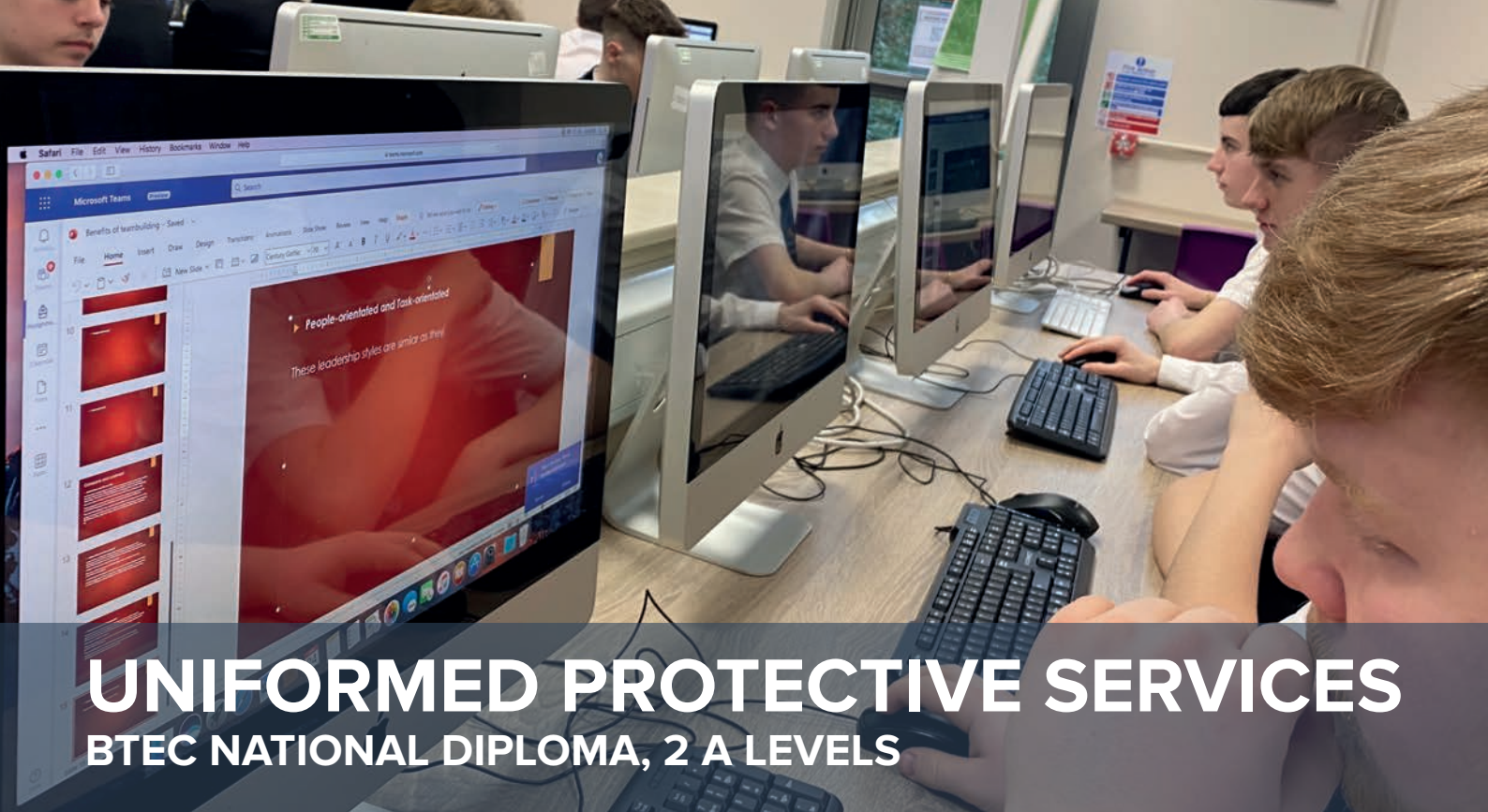
How it is Assessed

33% External examination – Unit 2

67% Internally set and marked Portfolios – sample will be externally moderated

Associated Careers

- Army, Navy, RAF
- Ambulance Service, Fire Service, PSNI
- Prison Service, Probation Service
- Law
- Education
- Health and Social Services
- Environmental Health, Housing Service
- Youth Service, Outdoor Pursuits
- Government agencies, such as, Customs, Border Control, Immigration
- A broad course with skills relevant to many other careers, such as, the Hospitality Industry



UNIFORMED PROTECTIVE SERVICES

BTEC NATIONAL DIPLOMA, 2 A LEVELS

Course Content

Mandatory Units

Unit 1 - Citizenship and Diversity – Pearson set research project

Unit 2 - Behaviour and Discipline in the Uniformed Protective Services External Exam 17%

Unit 4 - Physical Preparation, Health and Wellbeing

Unit 5 - Teamwork, Leadership and Communication in the Uniformed Protective Services

Unit 6 - Government and the Protective Services – External Exam 12.5%

Optional Units

Unit 10 - Skills for Outdoor Activities and the Uniformed Protective Services

Unit 12 - Developing Personal Fitness Programmes

Unit 13 - Introduction to Criminology

How it is Assessed

30% External examination – Units 2 and 6

20% Externally set and moderated Portfolio – Unit 1

50% Internally set and marked Portfolios – sample will be externally moderated

Associated Careers

- Army, Navy, RAF
- Ambulance Service, Fire Service, PSNI
- Prison Service, Probation Service
- Law
- Education
- Health and Social Services
- Environmental Health, Housing Service
- Youth Service, Outdoor Pursuits
- Government agencies, such as, Customs, Border Control, Immigration

Skills Developed

- Professional and personal skills
- Communication, verbal and non-verbal
- Presentation, research and evaluation
- Co-operation, problem solving and teamwork
- Conflict management
- Self-evaluation and self-management
- ICT skills in commonly used programmes
- Leadership and instruction
- Action Planning
- Peer Assessment
- Adaptability



SPORT AND PHYSICAL ACTIVITY

OCR CAMBRIDGE TECHNICAL EXTENDED CERTIFICATE, 1 A LEVEL

Course Content

A combination of sports performance, leadership skills and learned sports-related knowledge are assessed in this course.

The units you will study include:

- Body Systems and the effects of Physical Activity
- Sports Coaching and Activity Leadership
- Sports Organisation and Development
- Organisation of Sports Events
- Practical Skills in Sport and Physical Activities

Pupils will be assessed on their performance of a team sport and individual sport, taking part in practical sports sessions in school.

How it is Assessed

42% - External assessment

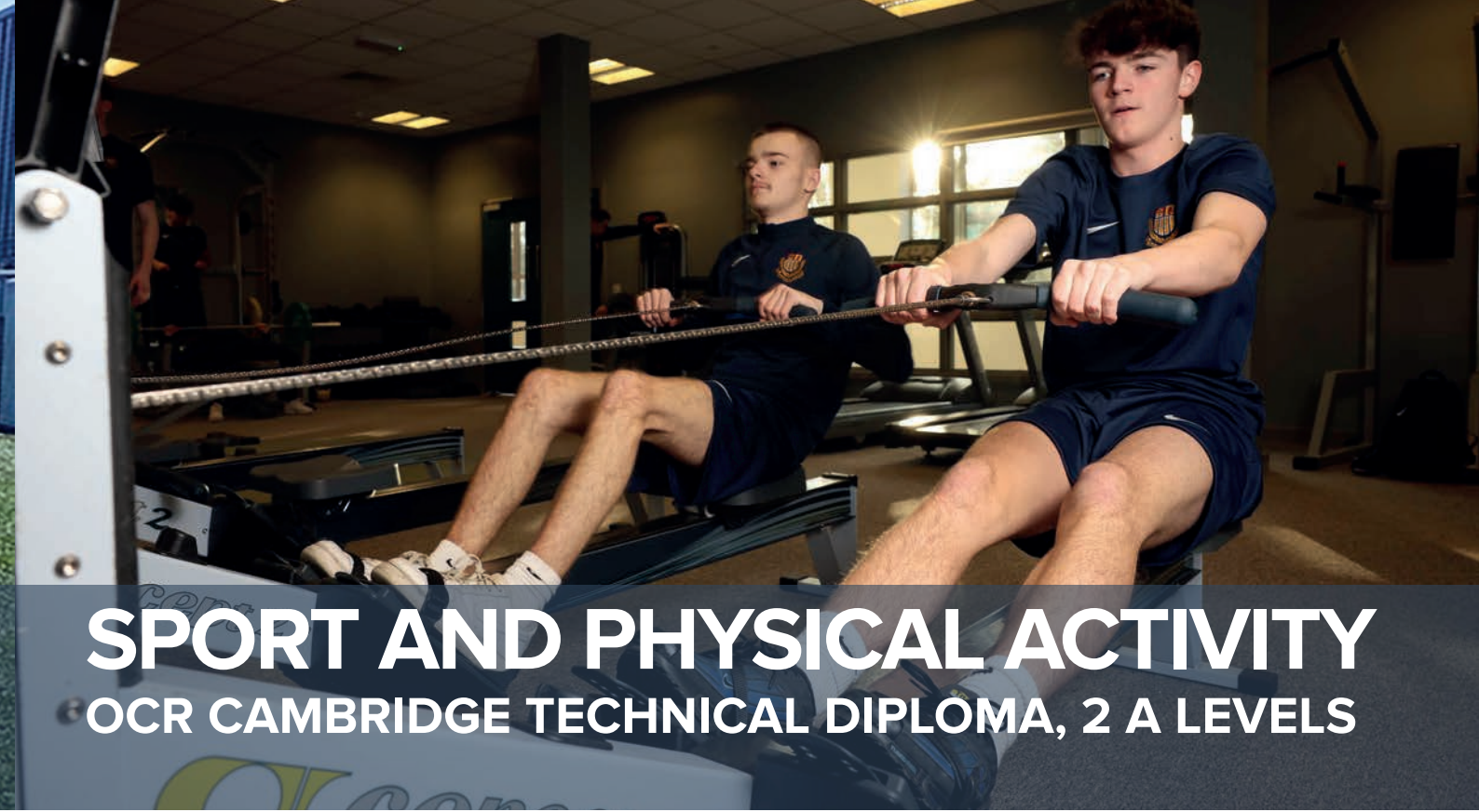
58% - Internal assessment

Associated Careers

- Physiotherapy
- Sports coaching
- Sports officiating
- Leisure centre management
- Sports science
- Performance analysis
- Teacher

Skills Developed

- Organisation
- Leadership
- Presenting
- Planning
- ICT
- Physical and sports-related



SPORT AND PHYSICAL ACTIVITY

OCR CAMBRIDGE TECHNICAL DIPLOMA, 2 A LEVELS

Course Content

The units you study will include:

- Body Systems and the Effects of Physical Activity
- Sports Coaching and Activity Leadership
- Working Safely in Sport, Exercise, Health and Leisure
- Performance Analysis in Sport and Exercise
- Organisation of Sports Events
- Physical Activity for Specific Groups
- Sports Injuries and Rehabilitation
- Practical Skills in Sport and Physical Activities
- Health and Fitness Testing for Sport and Exercise
- Sport and Exercise Psychology

Skills Developed

- Research
- Teamwork
- Planning training programmes
- Evaluating and making recommendations to help improve performance
- Creating and delivering presentations
- Writing reports
- Leadership skills
- Problem Solving
- Decision Making
- Healthy living and lifestyle skills

How it is Assessed

33% - External assessment

67% - Internal assessment

Associated Careers

- Sports Coach
- Sports Physiotherapist
- Sports Analyst
- Sports Writer
- Personal Trainer
- Teacher



TECHNOLOGY PRODUCT DESIGN 1 A LEVEL, WJEC

Course Content

The course is comprised of two units:

- **Unit 1: Design and Technology in the 21st Century (Product Design)**
Exam 50%
- **Unit 2: Design and Make Project**
Coursework 50%

Skills Developed

- Working with others in teams
- Working independently
- Identifying problems
- Produce outline plan with contingency plans to solve problems
- Understanding materials
- Design and modelling skills
- Mechanisms
- Structures
- ICT skills through the use of information sources

How it is Assessed

50% Exam

- Principles of Design
- Problem Solving

50% Folder and Practical Work

Associated Careers

- Product Designer
- Retail Display Assistant
- Model Maker
- Fashion Designer
- Landscape Architect
- Construction Engineer
- Engineering Technician
- Chartered Engineer
- Orthotics / Prosthetics
- Design & Technology Teacher
- Occupational Therapist
- Special Effects Designer
- Graphic Designer
- Dental Technician



TRAVEL & TOURISM

BTEC NATIONAL EXTENDED CERTIFICATE, 1 A LEVEL

Course Content

Mandatory Units

- Unit 1 - The World of Travel & Tourism
- Unit 2 - Global Destinations
- Unit 3 - Principles of Marketing in Travel & Tourism

Optional Units

- Unit 9 – Visitor Attractions

Skills Developed

- Organisation
- Presentation
- ICT
- Research
- Communication
- Literacy
- Teamwork
- Self-Management
- Ability to work to deadlines
- Problem Solving
- Independent Thinker
- Analysis
- Reflective Thinker
- Time Management

How it is Assessed

- 58% external assessment
- 42% internal assessment

Associated Careers

- Hotel Manager
- Outdoor Pursuits
- Event Organiser
- Marketing
- Pilot
- Theme Park Manager
- Travel Agency Manager
- Air Cabin Crew
- Tour Manager
- Holiday Representative
- Tourism Officer
- Fitness Centre Manager
- Customer Service
- Logistics



TRAVEL & TOURISM

BTEC NATIONAL DIPLOMA, 2 A LEVELS

Course Content

Mandatory Units

- Unit 1 - The World of Travel & Tourism
- Unit 2 - Global Destinations
- Unit 3 - Principles of Marketing in Travel & Tourism
- Unit 4 - Managing the Customer Experience in Travel and Tourism
- Unit 5 - Travel and Tourism Enterprises
- Unit 16 - Researching Current Travel Trends and Key Issues in Travel and Tourism

Optional Units

- Unit 9 - Visitor Attractions
- Unit 15 - Recruitment and selection in Travel and Tourism

Skills Developed

- Organisation
- Presentation
- ICT
- Time Management
- Analysis
- Research
- Communication
- Literacy
- Teamwork
- Self-Management
- Problem Solving

How it is Assessed

- 29% external assessment
- 71% internal assessment

Associated Careers

- Hotel Manager
- Outdoor Pursuits
- Event Organiser
- Marketing
- Pilot
- Theme Park Manager
- Travel Agency Manager
- Air Cabin Crew
- Tour Manager
- Holiday Representative
- Tourism Officer
- Fitness Centre Manager
- Customer Service
- Logistics



A LEVELS SHARED DELIVERY

To ensure you have access to a broad range of subjects at A Level, Belfast Boys' Model School works closely with local schools within the North Belfast Area Learning Community (NBALC) and Belfast Model School For Girls through our consortium to provide further choice of post 16 level 3 courses. Subjects on offer, which are not usually provided by Belfast Boys' Model School have included:

- Applied Health and Social Care
- Chemistry
- Economics
- French
- Geography
- Health & Life Sciences
- Moving Image Arts
- Performing Arts
- Spanish
- Physics
- Sociology

Skills Developed

- Time management
- Resilience
- Self management
- Communication
- Organisation
- Confidence

These subjects require 30 points from best 5 GCSEs and will be dependent on the subject entry criteria of each ALC school. A final list of subjects will be available to pupils in May 2023.



1 Year Courses



EMPLOYABILITY LEVEL 2

1 GCSE, ASDAN LEVEL 2

Course Content

- Customer Service
- Applying for a job
- Career Exploration
- Working to good practice standards
- Learning through work experience
- Planning & reviewing own learning

How it is Assessed

- **No Written Exam**
- 100% Coursework
- Candidates will produce 6 portfolios of evidence
- 3 core units which must be at Level 2

Associated Careers

Appropriate for all types of careers

Skills Developed

- Teamworking & interpersonal skills
- Communication skills
- ICT skills
- Research and analytical skills
- Work based skills appropriate to the work experience placement
- Planning, evaluation and self-management skills
- Skills relevant to presenting yourself in appropriate manner to employer
- Employability skills and effective methods of communication in the world of work
- Entrepreneurial skills by understanding ICT and its relevance in employment



OCN NI L2 CERTIFICATE IN VOCATIONAL SKILLS

OCN, 1 GCSE

Course Content

Core Unit

- Health and Safety in a Working Environment
- Catering
- Sport and Leisure for Business
- Digital Photography for Business
- Construction Skills
- Digital Office Skills

Skills Developed

- Presentation skills
- Teamwork
- Leadership
- Communication Skills

How it is Assessed

- **100% Coursework**
- 1 core unit (3 credits)
- All units are assessed through portfolios/coursework.
- No Written Examination
- 13 credit points are required to pass this course
- Assessment Grade B or Fail

Associated Careers

- Hospitality
- Retail
- Apprenticeships
- Administration
- IT
- Business

Duke Of Edinburgh Award Scheme

First Aid Barista Training *Hospitality*

Aid **The Voice** Primary School Mentoring

BOXING Photography **FOOTBALL ACADEMY** Peer Mentoring

Model Scientists Creative Learning

Health and Fitness

Enrichment

IFA Sports Coaching

Turing Project **Streetbeat**

Music Performance R-City

Career Ready General Indoor Sports

Young Enterprise: Art Coding & App Building

Peace Players

CRUSADERS ACADEMY



We have established a partnership with Crusaders FC to offer a Post 16 pathway that involves academic study at BBMS and the Crusaders Football Academy. This partnership offers 12 hours contact time with the Academy weekly, providing insight and opportunities to train like young professional footballers.

The aim of the partnership is to educate pupils both on and off the pitch and in the gym (strength and conditioning). It provides a pathway for the students to best fulfill their potential at whatever level of football is best for them. Pupils are also offered engaging employment and work experience opportunities.



In addition to the academic courses offered in Sixth Form, pupils benefit from Enrichment courses to develop a range of skills to make them more rounded, employable individuals. Employers demand candidates who have fully-developed work-ready skills, such as leadership, communication, resilience. Therefore, we focus on developing these to make Boys' Model pupils more successful in their pathway, when they leave us. The list grows each year, but pupils take part in options such as:

Hospitality

- Learn and/or improve practical catering skills
- Plan and prepare a variety of dishes.



Duke of Edinburgh

- Opportunity to gain a Silver Duke of Edinburgh Award

Health and Fitness

- An Introduction to Personal Training

General Indoor Sports

- Allows students to access sports that interest them.

IFA Sports Coaching

- Workshops & programmes delivered through the IFA.

R-City

- Range of programmes to develop your skill set – opportunities in personal & social development, leadership learning & employability



Music Performance

- Event management, gain experience playing instruments or DJ-ing.

The Voice

- This is aimed at developing Oracy skills & includes topical debates, visits.

Football Academy

- U16 and U18 'A' team footballers participate in cup matches, friendlies and specialist training sessions to enhance skills.



Boxing

- Students develop boxing movements, co-ordination and fitness.

Photography

- Delivered in conjunction with Belfast Exposed, helps students gain experience using professional equipment

Creative Learning

- Plan, direct and edit your own short film, developing technical skills such as camera work, sound recording, editing





Turing Project

- British Council scheme that provides the opportunity to travel abroad and complete projects with students from different countries. Pupils get to experience different cultures while developing their leadership skills and gaining an understanding of global Britain.

Model Scientists

- Become a young STEM Ambassador and use problem solving and critical thinking to design and research investigations



Young Enterprise: Coding and App Building –

- Gain experience in setting up and running your own profit-making business
- Supported by a volunteer business adviser

Streetbeat

- Programme to help young people fulfil their potential with a range of experiences from group work programmes to life coaching while being fun and exciting.

Peer Mentoring

Level 1 OCN certificate in Peer Mentoring to provide support to younger pupils



Primary School Mentoring

- Provided with specialist training to ensure they can help prepare the incoming cohort to settle into school life as best as possible.

Career Ready

- Develop employability skills, take part in Masterclasses & link with a Mentor from all industries.

Peace Players

- An OCN Leadership Development programme looking at ways of using the model of positive sports coaching to learn about and promote good relations.



First Aid

- This is a fully accredited First Aid course

Mountain Biking

- Develop your mountain biking skills and increase your fitness levels

Barista Training

- An introduction to Barista training and develop your customer service skills

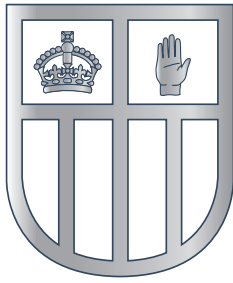
Art

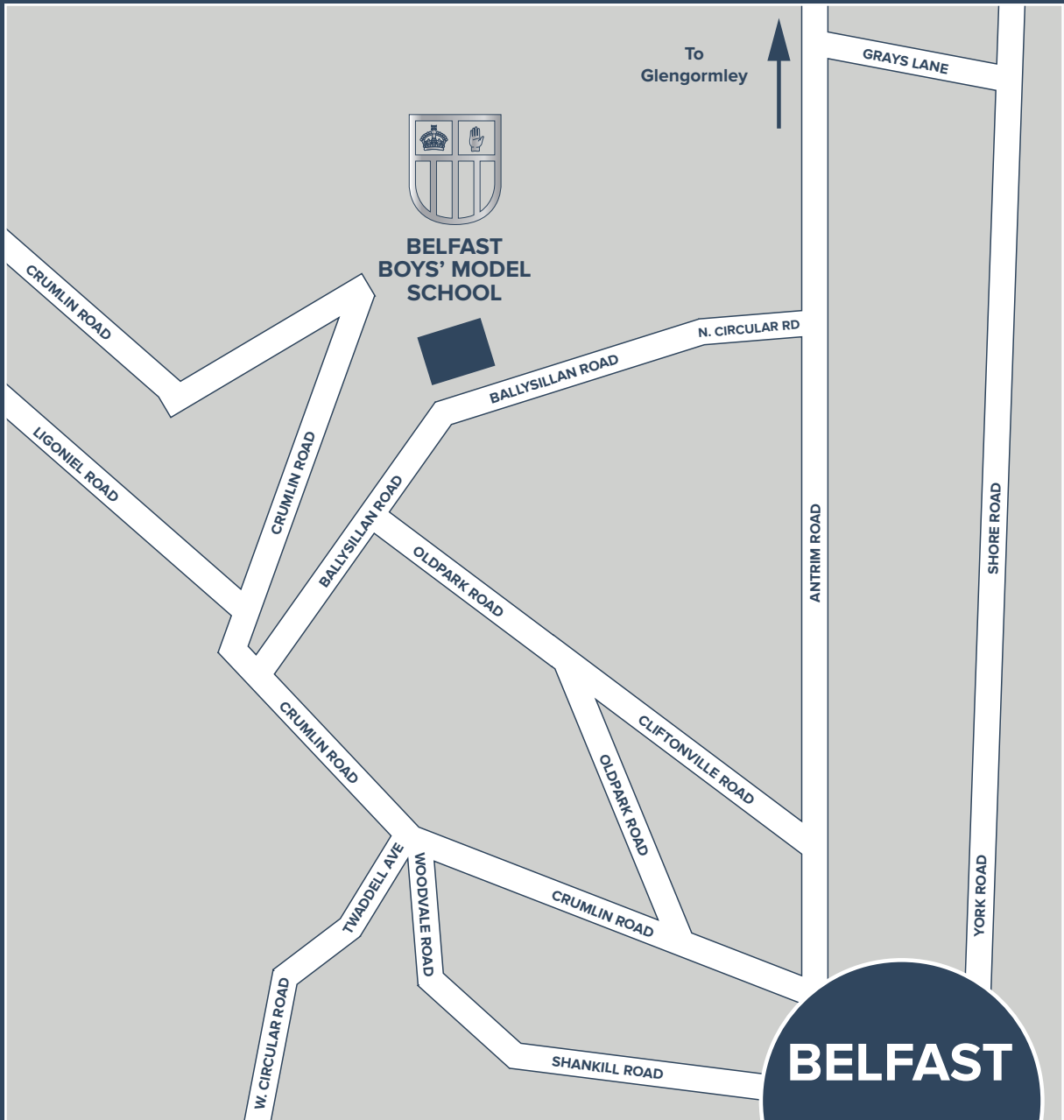
- Workshops in printmaking & ceramics, developing skills in design, use of colour, 3D

ENRICHMENT









Belfast Boys' Model School

Ballysillan Road | Belfast | BT14 6RB

T: 028 9039 1156

www.bbms.org.uk